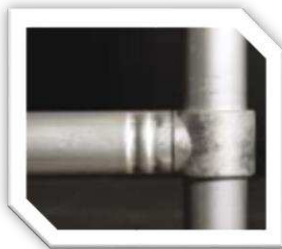


Mono-Tower

Aluminium Tower System

key features

- One Man build access tower.
- High strength rust-free aluminium Rib-Grip™ frames.
- Built to a max working height of 6m.
- Easily fits through standard doorways and into vans for transport.
- **Length:** 1.29m **Width** 0.67m
- **Max Tower Capacity:** 360 kg



Rib-Grip:
Cold-Formed Joints
have **3 times** the
strength of welded
joints



The Mono Tower is a unique market-leading access product which can be assembled to a working height of 6m by one person in minutes, reducing time and labour costs. It comes self-contained in its own transport and storage unit to allow for easy transport and handling. Also available in custom corporate colours for easy on-site product identification and corporate branding.



Colour Option



Self-Contained Unit



For further details please contact Keith Hennessy, Business Development - Ireland, on
Mob: 087 2331031 Tel: +353 (01) 506 0454
Email: KHennessy@ridgeway-online.com www.ridgeway-online.com

