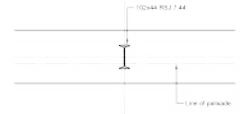


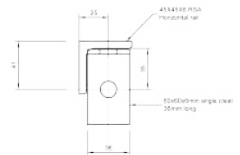
ELEVATION ON TYPICAL PANELS

SCALE: 1:25



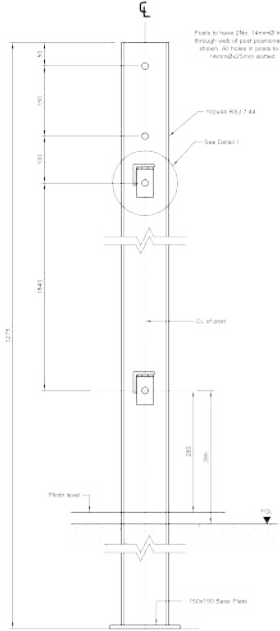
PLAN

SCALE: 1:10



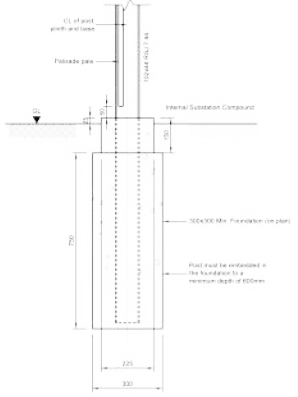
DETAIL 1

SCALE: 1:2



POST DETAILS

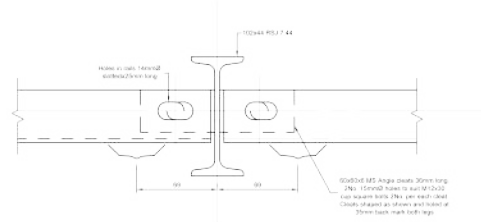
SCALE: 1:1



SECTION

DETAILS OF PLINTH

SCALE: 1:10



INTERMEDIATE POST CONNECTION DETAILS

SCALE: 1:2

NOTES

1. All dimensions are in millimetres (1:50)
2. This drawing must be read in conjunction with all relevant drawings and specifications as issued by the SAC Civil Group
3. Construction techniques to comply with BS 5956: Code of Practice for Building
4. Equipment shall comply with BS 5956: Part 12
5. Posts to be min. 2.2m high
6. Corrugated plates max. spacing 145mm c/c
7. Min. width of plates shall be 70.2 mm
8. Plates shall be hot dipped galvanized (minimum thickness 1.5mm)
9. Flow channels shall be provided for backfill water as per BS1122: Part 12 Appendix A
10. Posts to be secured by horizontal rails with three (3) end-plates from long both sides of post
11. Posts to be 100x44mm RSJ sections (min.)
12. Horizontal rails to be 45x45x45mm angle secured to posts with 2x 100x44mm angle cleats
13. Connection rails to be 100x100mm channel to connect rails to posts and to connect rails to posts
14. After installation including setting of holes and welding, all components including rails, bolts and washers shall be hot dip galvanized to BS 729
15. Foundation slabs to be concrete grade C20/25 to BS 5329
16. All holes/sockets must be galvanized to BS 5329: C14
17. Gate post & bracing posts to be 100x100 (1 split channel)
18. Multiple panels, with gates and frames to be 100x100 (1 split channel)



NO.	DESCRIPTION	DATE	BY	CHKD BY	APP'D BY	SCALE
1	DESIGN	15/01/2012	SI			
2	CHECKED	15/01/2012	ASB			
3	APPROVED	15/01/2012	ASB		AT CAD	
4	DATE	15/01/2012			REVISED	
5	SCALE	As shown @ A1			T1	

Standard Civil Details

CHANGING NUMBER

CN-2012-901