

Press Gratings

ArcoRedman has been created by two of the leading global names in innovative grating technology, Arco Grating (UK) Ltd and Ridgeway Engineering Ltd. Together they have developed a pressed grating company to provide a 'Best in Class' UK manufacturing service facility, delivering an outstanding level of customer service, skill and expertise. Ridgeway is delighted to bring this innovation to the Northern Irish market.

Our success is based on bespoke tailoring, for all architectural designs, industrial contracts and offshore work.

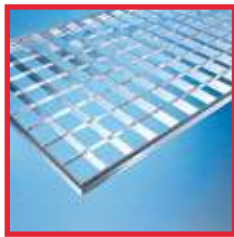


Product types include

- RR - Regular Pressed Grating
- RL - Louvered grating
- RO - Round Cross Bar Grating
- AP - Perfo

All products are available in a variety of finishes

- Mild Steel
- Galvanised
- Aluminium
- Stainless Steel (Grade 304 & 316)



Product Type RR

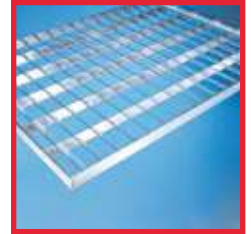
Whether it's traditional flooring, balustrade infills, sunscreens and fencing, type RR grating fulfils a variety of uses.

Constructed with two flat bars, the bearing bar is available from 20mm x 2mm to a 70mm x 3mm flat

bar. Cross bars normally come as 10mm x 2mm. Over 100 mesh patterns are available in addition to the serrated and heavy duty 4mm and 5mm options.

Product Type RL

This louvered grating is ideal for solar shading as well as screens, vents and fencing. The bearing bar is offered at a 45deg or 60deg pitch in various mesh pattern options.



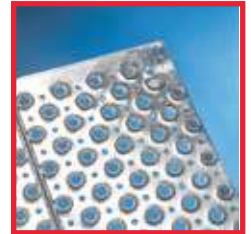
Product Type RO

Commonly used as fencing or balustrade, type RO offers an alternative look to type RR. It uses a bearing bar from 25mm x 3mm to 70mm x 3mm with a 5mm round cross bar. Various mesh alternatives are available.



Product Type AP - Perfo

Perfo is a quick and cost effective system for stairtreads, ramp access, walkways, cladding and general flooring. It is constructed in 2mm or 3mm mild steel, 2mm stainless steel 304 or 3mm aluminium sheets.



This is punched into a relevant type then formed into planks for grid sections, which can be open ended or welded on end plates for fixing.

**Please contact our sales office
for more details**