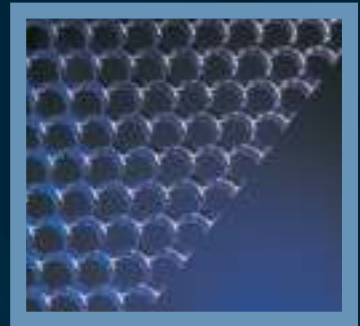


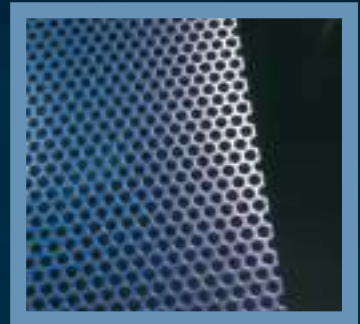


Three great products - one great service.

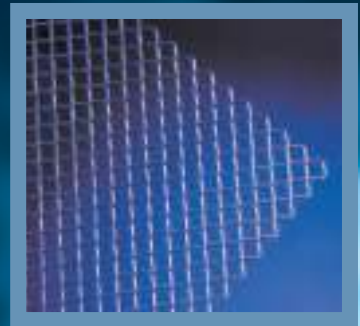
**Experf Mesh**



**Perforated Mesh**



**Square Mesh**



Expamet, the market leader in expanded metal now also stock Perforated Mesh to complement its extensive expanded metal products range.

## Experf Mesh

Ref No.	Material	Hole Diameter	Thickness	Open Area	Sheet Size	
1302F	Galvanised	3mm	0.6mm	47%	1250 x 1250mm	 3mm
N6664F	Galvanised	5mm	0.7mm	49%	1250 x 2500mm	 5mm
N7486F	Stainless Steel	5mm	0.7mm	60%	1250 x 2500mm	
N7482F	Aluminium	5mm	1.2mm	53%	1250 x 2500mm	
N7483F	Galvanised	5mm	1.2mm	54%	1250 x 2500mm	
N7484F	Galvanised	5mm	1.0mm	54%	1250 x 2500mm	
N7485F	Galvanised	5mm	1.6mm	54%	1250 x 2500mm	
N6912F	Galvanised	5mm	0.7mm	36%	1250 x 2500mm	 5mm
N6659F	Galvanised	6mm	0.7mm	54%	1250 x 2500mm	 6mm
N7698F	Aluminium	6mm	1.0mm	63%	1000 x 2000mm	
N7699F	Galvanised	12mm	1.5mm	70%	1250 x 2500mm	 12mm
N7700F	Steel	12mm	1.5mm	70%	1250 x 2500mm	
N7701F	Aluminium	12mm	1.0mm	70%	1000 x 2000mm	

### The Expamet Experf and Square Mesh ranges are the ideal alternatives to Perforated metal.

Expamet Experf and Square Mesh are expanded metal products. Because these products are expanded rather than punched means that raw material usage is reduced by up to 50% thus giving a significant cost reduction.

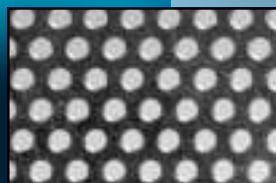
We carry extensive stocks of all products shown in this brochure and offer a next day delivery service.

#### IMPORTANT POINTS TO REMEMBER:

- **Extensive stocks**
- **Next day deliveries**
- **Experf offers significant savings over Perforated metal**
- **Specialised meshes produced to individual requirements**

## Perforated Mesh

Ref No.	Material	Hole Diameter	Thickness	Open Area	Sheet Size
---------	----------	---------------	-----------	-----------	------------



3mm

R3 T5

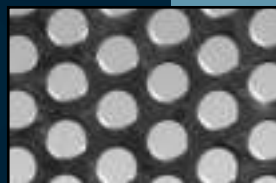
Galvanised

3mm

0.7mm

32%

1250 x 2500mm



5mm

R5 T7.5

Galvanised

5mm

1.0mm

40%

1000 x 2000mm



8mm

R8 T11

Steel

8mm

1.5mm

48%

1250 x 2500mm



10mm

R10 T12.7

Steel

10mm

1.0mm

40%

1000 x 2000mm

## Square Mesh

Ref No.	Material	Hole Size	Thickness	Open Area	Sheet Size
---------	----------	-----------	-----------	-----------	------------



10mm

N7702F

Galvanised

10mm

1.0mm

75%

1000 x 2000mm



16mm

1601F

Galvanised

16mm

1.0mm

85%

1250 x 1250mm

Listed below are applications that are ideally suited to  
EXPERF, PERFORATED & SQUARE MESHES.

<i>ACOUSTIC INSULATION</i>	<i>FURNITURE</i>
<i>AIR INTAKE SCREENS</i>	<i>GATES</i>
<i>AGRICULTURE</i>	<i>LIFT ENCLOSURES</i>
<i>BALUSTRADING</i>	<i>ORNAMENTAL METALWORK</i>
<i>CEILING TILES</i>	<i>ROOM DIVIDERS</i>
<i>CLADDING</i>	<i>RADIATOR GRILLES</i>
<i>EXHIBITION STANDS</i>	<i>SECURITY SCREENS</i>
<i>FACADES</i>	<i>SPEAKER GRILLES</i>
<i>FILTRATION AIR/GREASE</i>	<i>SUN SCREENS</i>

*For orders, quotation requests and further information, please contact:*

SALES OFFICE: Tel: +44 (0) 1429 867388 Fax: +44 (0) 1429 866795

Email: [sales@expametind.freemove.co.uk](mailto:sales@expametind.freemove.co.uk) Website: [www.expamet.co.uk](http://www.expamet.co.uk)



The Expanded Metal Company Limited  
PO Box 14  
Greatham Street  
Longhill Industrial Estate (North)  
Hartlepool  
TS25 1PR