

Handrailing Connectors

Ridgeway offer a range of mild steel handrailing connectors to complement our handrail standards and sections.

Handrailing Connectors

▫ Crimp Connectors

Crimp connectors are for use with 25mm nominal bore (33.7mm dia) medium gauge tube. These connectors are used in association with a special crimping tool (available for sale or hire).

▫ Expanding Type Connectors

Expanding connectors are for use with 25mm nominal bore (33.7mm dia), 32mm nominal bore (42.4mm dia) and 40mm nominal bore (48.4mm dia) tubular handrailing.

▫ Internal Grubscrew Type Connectors

Internal grubscrew connectors are suitable for 25mm nominal bore (33.7mm dia), 32mm nominal bore (42.4mm dia) and 40mm nominal bore (48.4mm dia) tubular handrailing, together with M8 grubscrews for fastening.

▫ Solid Handrailing Type Connectors

Solid Connectors are welded to the solid handrailing and ground flush. The male connectors fits into the female and are locked together by means of a grubscrew.



Ridgeclamp

With over 60 different fittings to suit any project, customers can be assured of getting everything they need for their handrail system from Ridgeway. Our fastclamp fittings tighten together with grub screws making them cost effective, and fast and easy to erect using simply hand tools for even the most complex of structures. Ridgeway stock the full range of fastclamp fittings to ensure the accessibility for our customers to suit almost any applications.



Applications Include

- Handrailing
- Guardrailing
- Tyre Racks
- Car Ports
- Polytunnels
- Fruit Cages
- Garment Racks
- Frames
- Canopies
- Market Stalls
- Storage Racks
- Work Benches
- Exhibition Stands
- Security Cages
- Cattlepens
- Cricket Screens
- Greenhouses
- Barriers



**We stock Galv tube lengths to suit fittings
25,32 and 40 n/b**

Beamclamp

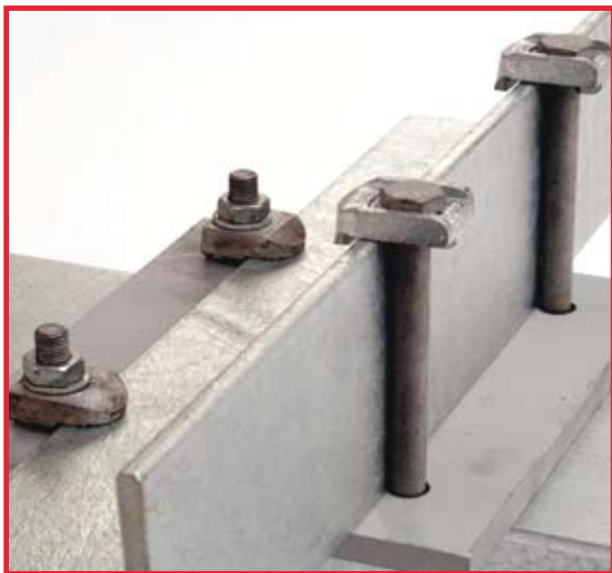
A range of fixings designed for making steel work connections without the need to drill or weld on site.

Applications Include

- Steelwork fixings
- Cavity fixings
- Support fixings
- Floor Fixings

ONLINE CONNECTION DESIGNER AVAILABLE AT

www.beamclamp.com/configurator



Zinga

Zinga is a one-component cold applied anti-corrosion zinc coating. Its unique formula provides environmentally safe cathodic protection to steel comparable with hot dip galvanizing with the added advantage that it can be applied as though it were a paint. Zinga is a one pack zinc coating system that can be applied by spraying, rolling or brushing. It is also available in spray cans. It is safe because it contains no known carcinogens and is totally non-toxic in its dry state.



Key advantages

- Safe and easy to use
- Can be applied on site
- Can be used to re-coat existing galvanising
- Existing layers of Zinga can be re-coated
- Excellent primer in Duplex system
- Good Resistance to mechanical abrasion
- Excellent adhesion
- Extremely flexible
- Can be applied to mildly damp surfaces
- Can be applied in extreme temperatures
- Weldable to X-ray quality
- Certified for use with potable water
- Certified as non-flammable
- Unlimited shelf-life and unlimited pot-life



Salt-spray tests and experience from the field have shown that Zinga lasts up to 10% longer than HDG in marine or saline environments due to a slower rate of zinc loss.