



RIDGWAY

METAL MESH POCKET GUIDE

Company Profile



Ridgeway is the leading supplier of industrial open grid flooring and metal mesh products in Ireland.

Ridgeway offers the total solution for platforms, walkways, handrailing, stairtreads, metalwork and steelwork in Mild Steel, Stainless Steel, Aluminium & GRP to suit existing or new requirements.



Focusing on practical engineering solutions, supported with advanced technology and the latest in modern supply processes, Ridgeway has the capacity to handle large or small projects and the flexibility to deliver quality products on time and within budget.

Our service is supported by an extensive design office equipped with the latest software to provide you with cost effective, value-engineered solutions that can be dispatched electronically.

Your enquiry or order will be processed by our dedicated sales team offering a level of service to satisfy your expectations.



Contents

2	Company Profile
4	Ridgeway Overview
6	Flooring Products
19	Staircases / Stairtreads
20	Press Gratings
22	Handrailing Products
26	Beamclamp
27	Zinga
28	GRP Products
30	Weldmesh™
36	Perforated Metal
38	Security Fencing
40	Fencing Ball Courts
43	Gates & Access Control
44	Temporary Fencing
45	Gabions
48	Architectural Mesh
50	Expanded Metal
55	Industry Applications

Ridgeway Overview

METAL MESH	ACCESS PRODUCTS	SPECIALIST HIRE CENTRE
WELDMESH™	INSTANT UPRIGHT ALLOY TOWERS	SMALL TOOLS AND PLANT
EXPANDED METAL	SPANDECK WALKWAYS	ALLOY TOWERS
PERFORATED METAL	ALISCAFF CHIMNEY SCAFFOLDING	SAFE ACCESS SOLUTIONS
ARCHITECTURAL WOVEN MESH	LADDERS AND STEPS	GRACO AIRLESS SPRAYERS
FLOWFORGE OPEN STEEL GRATINGS	SAFE WORKING PLATFORMS	CONCRETE BURSTING
DECORATIVE EMBOSSED STAINLESS STEEL	FALL ARREST & RESTRAINT SYSTEMS	PERSONAL PROTECTIVE EQUIPMENT
MESH FENCING SYSTEMS	SAFESITE ROOF EDGE PROTECTION SYSTEMS	SPECIALIST DIAMOND CORE CUTTING & GRINDING
BARBED TAPE	SAFETY SYSTEMS	DIAMOND CONSUMABLES
GRP FLOOR & HANDRAILING STRUCTURES	COMBI SAFE	SODA BLASTING
Q GRATING	ON SITE SERVICES	CONSUMABLES
GABIONS & LAND REINFORCEMENT	TAILOR MADE ACCESS SOLUTIONS	
HANDRAILING SYSTEMS	GRP TOWERS & PLATFORMS	
AXESS LADDERS		
STAIRTREADS		
PRESS GRATING		
ARCHITECTURAL CLADDING		

SPRAY AND PUMP EQUIPMENT	BUILDING PRODUCTS	TRAINING
GRACO SPRAY SYSTEMS	EXPAMET BEADS AND LATHS	PASMA SCAFFOLD TRAINING
INDUSTRIAL MANUFACTURING SOLUTIONS	BAT STRUCTURAL FIXINGS	ABRASIVE WHEEL TRAINING
ELECTROSTATIC SPECIALISTS	BRC BEDJOINT REINFORCEMENT	CSR CARD TRAINING
HYDRACAT BUILD EXPERTS	RIDGE-FENCE TEMP FENCING	MANUAL HANDLING
POWDER PAINT APPLICATION	HOARDING PANELS	SAFE HARNESS USE
DALBY SPRAY BOOTHS AND OVENS	FAST CLAMP TUBE FITTINGS	RISK ASSESSMENT
DESIGN AND BUILD FLUID TRANSFER	STAINLESS STEEL FIXINGS	HEALTH AND SAFETY
CONTRACTOR EQUIPMENT	METPOST	SPECIALIST PAINT SPRAY TRAINING
FULL PARTS AND MAINTENANCE BACK UP	BEAMCLAMP	

Flooring Products

Flowforge Flooring



Ridgeway open steel rectangular pattern flooring is constructed from mild steel to BS EN 10 025 Fe430A and is constructed by a forge-welding process in which the load bearing and transverse bars are heated and joined under pressure.

Standard Range

Pitch	Bearing Bars	Serrated	Plain	Galv	Self Colour
41/100	25 - 50 flat				
	3mm or 5mm	Yes	Yes	Yes	Yes
41/50	25 - 50 flat				
	3mm or 5mm	Yes	Yes	Yes	Yes
30/100	25 - 50 flat				
	3mm or 5mm	Yes	Yes	Yes	Yes
30/50	25 - 50 flat				
	3mm or 5mm	Yes	Yes	Yes	Yes

Our full range of pitches available are: 41, 35, 33, 30 or 21 by 100, 50, 75 or 37.5mm - see below.

* 20 & 60mm depth available on request.

Bar Arrangements

Many types of flowforge bar arrangements have been developed to comply with worldwide application and safety requirements and allow a customer to choose a flooring to match loading requirements. In addition, a range of smaller mesh sizes gives the added safety feature of stopping objects from passing between the bars and increased areas of underfoot contact.

Transverse bar are 6mm twisted square bar, but others are available.

Flowforge is available in standard panel form, normally from stock, in nominal 6m x 1m lengths. All fabrication is done from these 6m x 1m nominal mats to suit individual requirements.

Applications

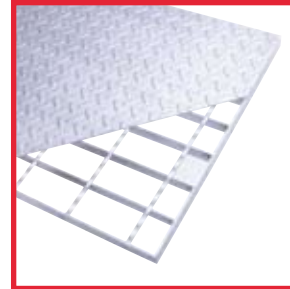
Flowforge is suitable for most flooring walkways, gantries, platforms etc and has been used upright as fencing.

Serrated Flowforge gives improved grip in oil and icy conditions for improved performance particularly for the offshore industry.

* Load tables are available on page 12 & 13.

Flowdeck Durbar Flooring

Flowdeck is half the weight of equal strength chequer plate. This equates to less tonnage for handling, transportation and erection than with the equivalent chequer plate, producing overall cost and weight savings.



Standard Range

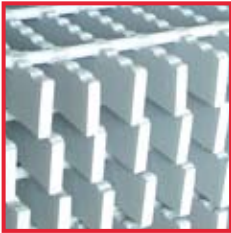
The basic substructure of Flowdeck is Flowforge Open Steel Flooring with load bearing bars at 41mm pitch (5mm thick for heavy duty type) with 6mm transverse bars welded at 100mm centres and a surface plate of 3mm thick durbar pattern chequer plate welded to the substructure.

Special Flowdeck flooring can also be designed to suit wheel loadings.

**Please contact our sales office
for more details**

Heavy Duty Flooring

Flowforge



Ridgeway's range of Heavy Duty flooring combines all the advantages of forge welded Flowforge with the extra load carrying capabilities of a heavy-duty floor.

Heavy Duty Flowforge is constructed from load-bearing bars in various sizes at 35mm and 41mm pitch with 8mm

or 9mm dia. rods forge welded to the upper edges of the load bearing bars. Other bar arrangements may be available upon request dependent on quantity.

Flowgrid

Flowgrid is available with load bearing bars at 50mm pitch with 12mm square bars securely welded to the load bearing bars at 100mm pitch. Other bar arrangements are available on request, dependant of quantity.

Flowgrate

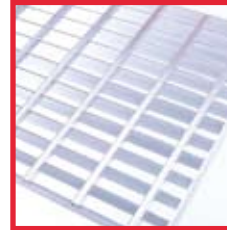
Flowgrate is available with load bearing bars 30mm to 100mm. (These bars are spaced at 50mm, others are available on request.)

Standard finish is either self-colour or galvanised.

Flowgrid and Flowgrate is designed as heavy-duty industrial flooring, ideally suited for use as

- Bridge Decking
- Trench Covers
- All applications where extra heavy loadings need to be sustained

Flowlok Aluminium Flooring



Flowlok is designed to give the maximum structural performance in corrosive conditions.

By virtue of its design, Flowlok is easily cut to shape without weakening its load carrying capacity.



Applications

- Architectural Walkways
- Sunshades
- Window Cleaning Access
- Roof Walkways

Benefits include

- Maximum Structural Performance
- Lightweight, Long Lasting & Highly visible
- Spark & Corrosion Resistant

Diamond Pattern

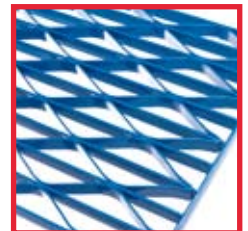
Constructed of load bars at either 38mm or 20mm spaces separated by pressed spacer bars welded on underside at every junction in mild steel.

Applications

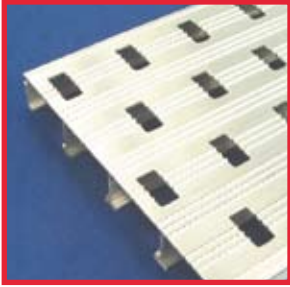
- Water, Petroleum and Process Industries
- Power Stations
- Offshore Installations

Standard Range

- Plain or Serrated load bearing bars
- 3mm or 5mm thick load bars
- 38mm(D38) or 20mm (D20) gaps
- Fully bound panels



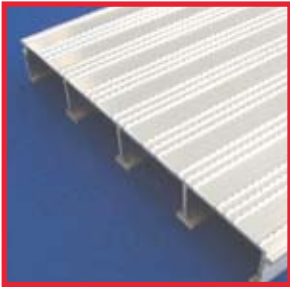
Flowgrip



Flowgrip is an extruded aluminium flooring with a ribbed pattern giving a slip resistant top surface. It gives maximum structural performance under corrosive conditions and can be cut to any shape to suit individual requirements.

Flowgrip has a very high strength to weight ratio and its lightweight, maintenance free qualities have led it to be used extensively in many areas.

Available in two different depths (40mm deep and 25mm deep), both with a plain surface, serrated surface and slotted plank to assist slip resistant and drainage if required.



Standard planks are 6m long by a nominal 250mm wide but Flowgrip is also supplied in a fully fabricated form to suit a client's requirement.

Applications

- Architectural Walkways
- Sunshades
- Window Cleaning Access
- Roof Walkways

Benefits include

- Maximum Structural Performance
- Lightweight, Long Lasting & Highly visible
- Spark & Corrosion Resistant

Standard Flooring Panels

Our Standard Products division is dedicated to supplying you with a range of our products 'Off the Shelf'. Stockline is a service created to guarantee stocks of our most popular products on a daily basis.

If you wish to fabricate your own products, then our Standard Products Division is ideal for you offering:

Standard Panels include

- 6m x 1m in Mild Steel (Self Colour or Galvanised)
- Stainless Steel in grade 304 or 316
- Aluminium in 4m x 1m

Our most popular load bar sizes are

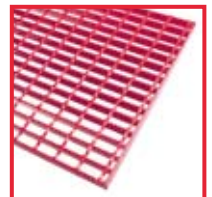
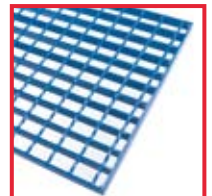
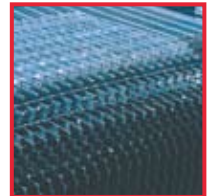
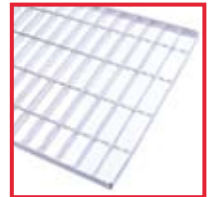
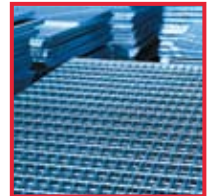
- | | |
|----------|----------|
| ▫ 25 x 3 | ▫ 25 x 5 |
| ▫ 30 x 3 | ▫ 30 x 5 |
| ▫ 40 x 3 | ▫ 40 x 5 |

in both 41/100 pitch and 30/100 pitch but if any of the above is not what you are looking for we can manufacture to suit your specifications.

Benefits include

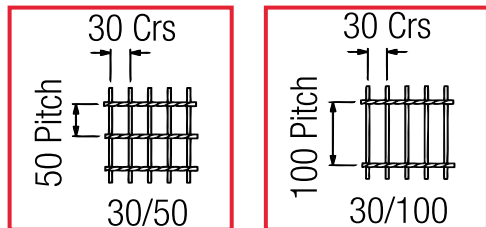
- Reduced Delivery time (usually 2/3 days)*
- Flexibility of projects
- Easy to order
- Saving you Time & Money

* Dependant on stock availability.



Load Tables

Flowforge



Steel Flooring - 30 Pitch

Use of Grating	UDL
Light Duty (Access limited to one person)	3.0 kN/m ²
General Duty (Regular two-way pedestrian traffic)	5.0 kN/m ²
Heavy Duty (High density pedestrian traffic)	7.5 kN/m ²

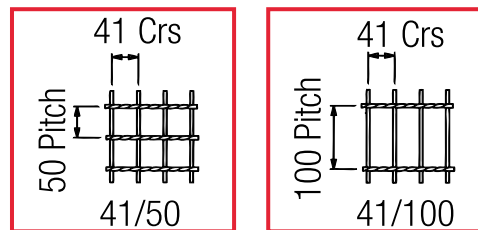
Flooring Type - 30/100

Load	Weight (Uniform Loading - Maximum Span)			
	kN/m ²	3 kN/m ²	5kN/m ²	7.5kN/m ²
20 x 3	0.190	1040	1020	890
25 x 3	0.231	1450	1275	1110
25 x 5	0.363	1690	1510	1320
30 x 3	0.271	1700	1535	1340
30 x 5	0.431	2000	1815	1580
35 x 3	0.309	1970	1790	1560
35 x 5	0.496	2260	2090	1850
40 x 3	0.350	2190	2030	1780
40 x 5	0.564	2520	2310	2080

*All units are in mm

*For serration factor please contact sales

*Other Configurations are available on request



Steel Flooring - 41 Pitch

Use of Grating	UDL
Light Duty (Access limited to one person)	3.0 kN/m ²
General Duty (Regular two-way pedestrian traffic)	5.0 kN/m ²
Heavy Duty (High density pedestrian traffic)	7.5 kN/m ²

Flooring Type - 41/100

Load	Weight Uniform Loading - Maximum Span)			
	kN/m ²	3 kN/m ²	5kN/m ²	7.5kN/m ²
20 x 3	0.148	890	920	800
20 x 5	0.228	0.228	1090	950
25 x 3	0.178	1240	1150	1000
25 x 5	0.275	1540	1360	1190
30 x 3	0.208	1560	1385	1200
30 x 5	0.325	1810	1640	1430
35 x 3	0.235	1780	1615	1410
35 x 5	0.373	2080	1915	1670
40 x 3	0.265	2020	1845	1610
40 x 5	0.423	2310	2140	1910
45 x 5	0.473	2550	2335	2110
50 x 5	0.520	2790	2530	2280
55 x 5	0.570	3010	2715	2450
60 x 5	0.620	3260	2900	2620

*All units are in mm

*For serration factor please contact sales

*Other Configurations are available on request

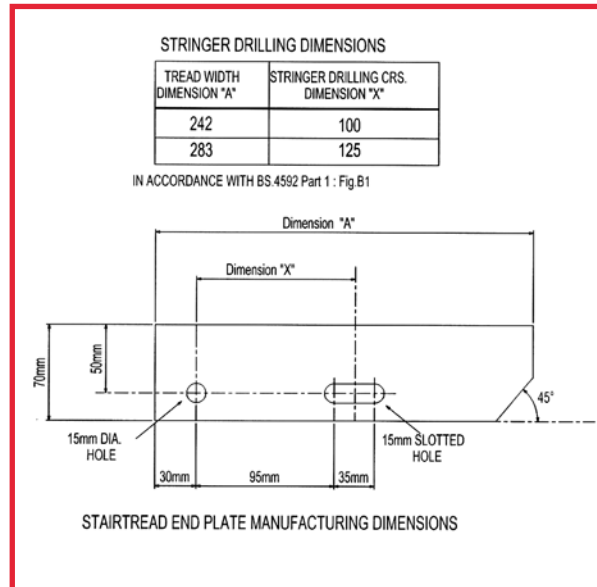
Stairtread

The tables below give all the necessary details for the most popular stairtreads.

Stairtreads

41/100	Uniform Load
30 x 30 x 3 Nosing	5kN/M2
Load Bar Size	Maximum Span*
25 x 3	730
25 x 5	1000
30 x 3	1100
30 x 5	1260
35 x 3	1280
35 x 5	1440
40 x 3	1440
40 x 5	1630

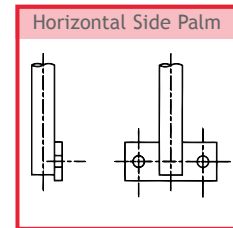
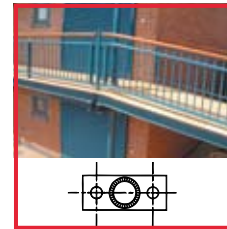
* Based on pedestrian loading



Handrailing

Handrailing

Handrailing Maximum Centres of 1100 high standards fixed to Steelwork (two hole flat base) at 550 centres					
Item	Size	Material Grade	Loading 0.36 kN/m	Loading 0.74kN/m	
Tubular Std	33.7 o/d x 3.0 thk 25NB	S355	1040	520	
Tubular Std	42.4 o/d x 3.0 thk 32NB	S355	1720	860	
Tubular Std	48.3 o/d x 3.0 thk 40NB	S355	2000	1280	
Tubular Std	48.3 o/d x 5.0 thk 40NB	S355	2000	1820	
Solid Std	32 dia solid	S275	1400	700	
Solid Std	38 dia solid	S275	1950	1150	
Solid Std	45 dia solid	S275	2000	1800	



Handrailing

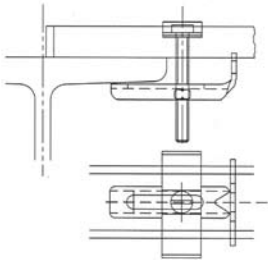
Handrailing Maximum Centres of 1200 high standards fixed to Steelwork (two hole side palm) at 550 centres					
Item	Size	Material Grade	Loading 0.36 kN/m	Loading 0.74kN/m	
Tubular Std	33.7 o/d x 3.0 thk 25NB	S355	820	410	
Tubular Std	42.4 o/d x 3.0 thk 32NB	S355	1500	800	
Tubular Std	42.4 o/d x 4.0 thk 32NB	S355	1720	860	
Tubular Std	48.3 o/d x 3.0 thk 40NB	S355	1840	1030	
Tubular Std	48.3 o/d x 5.0 thk 40NB	S355	2000	1600	
Solid Std	32 dia solid	S275	1180	600	
Solid Std	38 dia solid	S275	1800	1050	
Solid Std	45 dia solid	S275	2000	1800	

Accessories

Ridgeway offers a variety of accessories to compliment the flooring and handrailing products offered.

These include

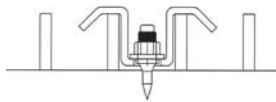
- Flooring clips (Assembled/Unassembled)
- KickKlamp connectors



Flooring Clips - FD600

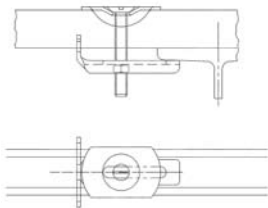
Used to fix down open steel flooring our new universal range is suitable for 30 and 41 pitch flooring and comes standard with a 70mm slotted bolt and hexagon nut.

Other bolts sizes are available on request. Bag and Labelled in 100No for convenience assembled or to suit your requirements unassembled.



Flooring Clips - Deep Recess Weld Stud

Provides a frictionless fitting and lateral restraint to a floor installation improving safety even when a top clip has been fixed.



Flooring Clips - FD551

This pressed clip is used for securing flooring with narrow pitch gratings (21mm and 25mm pitch)

Our sales team will supply all the necessary expertise and components required to complete your project.

KickKlamps

These new brackets are our new revolutionary system for fixing Kick Flat and toe board to handrail standards. The basic principal involves gripping the kick plate with steel 'forked fingers' and fixing to the tube upright with a single grub screw.



Benefits Include

- Retrofit to existing handrail
- Eliminate drawing office detailing
- No drilling required
- Easy installation of kick flat on site
- Simple, flexible and re-usable

KickKlamps are available to suit

- 25mm nominal bore shank (K25)
- 32mm - 40mm nominal bore shanks (K40)

To accompany our KickKlamp brackets we have connectors to help connect kick flat lengths.

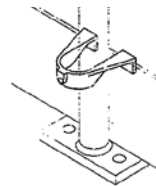
KCB 1 - Internal Connector



KCB 2 - External Connector

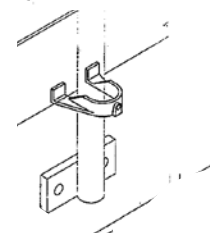


KCB 3 - Straight Connector



Flat Base Fixing System

- Fix KickKlamps at every standard on top of the Kick flat and clamp down against the base plate
- Use corner brackets and straight connectors as required



Side Palm Fixing System

- Alternate the KickKlamps, fixing them on top and bottom of the kick flat bars
- On shorter runs or for extra security, use two KickKlamps per standard, one on top and one on the bottom of the kick flat
- Use corner brackets and straight connectors as required

Ladders

Ridgeway offer a complete solution in various ladder and access requirements.

Benefits include

- User Confidence
- Increased Safety
- Variety
- Installation
- Self Assembly
- Support



Cat Ladders

When vertical access is required, Ridgeway can offer cat ladders to suit your requirements, offering you:

- Convenience
- Self Assembly
- Simplicity
- Economy
- Speed



Ships Type Ladders

Wherever possible it is desirable to install sloped ladders rather than vertical, Ridgeway offers a ships ladder used for access requiring a slope of at least 65° up to 75°. Ships type ladders offer a superior means of access over traditional cat ladders owing to the slope allowing easier ascent and descent. Single line handrailing is required both sides of the ships ladder.



Staircases / Stairtreads



Ridgeway have the facility to fabricate staircases and light structures in mild steel, with a variety of surface finishes. Ridgeway staircases are generally constructed from RSC or flat plate stringers complete with open mesh or solid durbar treads and our tubular or solid handrail systems.

Stairtreads

Ridgeway's open steel stairtreads are supplied with a variety of different non-slip sighting bars as standard. The normal bar arrangement for stairtreads are the standard flowforge types with 41mm or 30mm pitch, various load bars and various bar arrangements.

Stairtread production with our robot welder has significantly increased our capabilities in stairtreads offering:

- Faster lead times for produced items
- Range of 'off the shelf' stairtread items

To save you money and time on projects

Stockline Stairtreads include the following:

- 41/100 pitch
- 25mm x 5mm load bearing bars
- 800mm or 1000mm length
- 242mm or 283mm width
- Self Colour or Galvanised
- Delivery next day*

*Whilst stock lasts

Please turn to page 12 for our stairtread loadings and end plate details.



Press Gratings

ArcoRedman has been created by two of the leading global names in innovative grating technology, Arco Grating (UK) Ltd and Ridgeway Engineering Ltd. Together they have developed a pressed grating company to provide a 'Best in Class' UK manufacturing service facility, delivering an outstanding level of customer service, skill and expertise. Ridgeway is delighted to bring this innovation to the Northern Irish market.

Our success is based on bespoke tailoring, for all architectural designs, industrial contracts and offshore work.

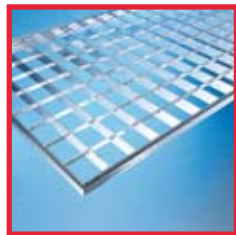


Product types include

- RR - Regular Pressed Grating
- RL - Louvered grating
- RO - Round Cross Bar Grating
- AP - Perfo

All products are available in a variety of finishes

- Mild Steel
- Galvanised
- Aluminium
- Stainless Steel (Grade 304 & 316)



Product Type RR

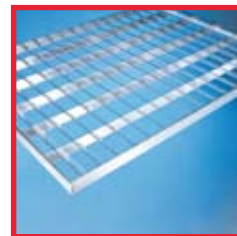
Whether it's traditional flooring, balustrade infills, sunscreens and fencing, type RR grating fulfils a variety of uses.

Constructed with two flat bars, the bearing bar is available from 20mm x 2mm to a 70mm x 3mm flat

bar. Cross bars normally come as 10mm x 2mm. Over 100 mesh patterns are available in addition to the serrated and heavy duty 4mm and 5mm options.

Product Type RL

This louvered grating is ideal for solar shading as well as screens, vents and fencing. The bearing bar is offered at a 45deg or 60deg pitch in various mesh pattern options.



Product Type RO

Commonly used as fencing or balustrade, type RO offers an alternative look to type RR. It uses a bearing bar from 25mm x 3mm to 70mm x 3mm with a 5mm round cross bar. Various mesh alternatives are available.



Product Type AP - Perfo

Perfo is a quick and cost effective system for stairtreads, ramp access, walkways, cladding and general flooring. It is constructed in 2mm or 3mm mild steel, 2mm stainless steel 304 or 3mm aluminium sheets.



This is punched into a relevant type then formed into planks for grid sections, which can be open ended or welded on end plates for fixing.

**Please contact our sales office
for more details**

Handrailing Products

Tubular / Solid Handrail Standards



Ridgeway handrailing and standards are used in every type of industry, for platforms, stairways, gangways, towers, danger zones and where protection is required against moving and stationary machines.

Standard finishes are self colour, or galvanised but other special finishes can be supplied such as paint or powder coating.

Products include

- Tubular Mild Steel
- Solid Forged Mild Steel
- Aluminium (Cast & Tubular)*
- Stainless Steel (Tubular)*

Tubular Standards Range

Our tubular handrail standards include:

- 25 Nominal Bore Shank (33.7mm o/d)
- 32 Nominal Bore Shank (42.4mm o/d)
- 40 Nominal Bore Shank (48.3mm o/d)

with various ball sizes to suit 25NB, 32NB or 40NB tubular handrail. 50NB available on request.

The Tubular handrail standards are produced using automatic sawing and welding machines and can be supplied as either fully fabricated or in kit form to suit your requirements.



Solid Forged Handrail Standards

Our Solid forged handrail standards include:

- 32 dia shank forged to suit 25NB tubing
- 38 dia shank forged to suit 25NB or 32NB tubing
- 45 dia shank forged to suit 25NB, 32NB or 40NB tubing

Solid Forged handrail standards are produced using our multiforge machine and can be supplied fully fabricated with base plates or in kit form to suit your requirements.

Base plates for both tubular and solid standards are 12mm thick (15mm available on request) with 18mm dia fixing holes.

Handrailing Sections

Standard Handrailing Sections

Standard Handrailing tubing is available as 25mm, 32mm and 40mm nominal bore in mild steel with a self colour finish or galvanised finish. Visit our website or contact our sales office for a copy of our stock sheet for items available ex stock.

Handrailing Stock Section range includes

D Bends

Stock 550mm centres with 400mm legs.

Raked D Bends

To suit staircase inclines (38deg and 42deg).
Stock 450 centres with 400 legs.

90° Bends

Stock 400mm x 400mm legs.

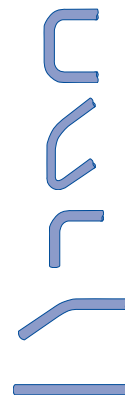
Ramp Bends

To suit staircase inclines (38deg and 42deg).
Stock 400mm x 400mm legs.

Tubing

25NB, 32NB in nominal 6.4m lengths.

* Other sizes and dimensions can be made to suit.



Handrailing Connectors

Ridgeway offer a range of mild steel handrailing connectors to complement our handrail standards and sections.

Handrailing Connectors

▫ Crimp Connectors

Crimp connectors are for use with 25mm nominal bore (33.7mm dia) medium gauge tube. These connectors are used in association with a special crimping tool (available for sale or hire).

▫ Expanding Type Connectors

Expanding connectors are for use with 25mm nominal bore (33.7mm dia), 32mm nominal bore (42.4mm dia) and 40mm nominal bore (48.4mm dia) tubular handrailing.

▫ Internal Grubscrew Type Connectors

Internal grubscrew connectors are suitable for 25mm nominal bore (33.7mm dia), 32mm nominal bore (42.4mm dia) and 40mm nominal bore (48.4mm dia) tubular handrailing, together with M8 grubscrews for fastening.

▫ Solid Handrailing Type Connectors

Solid Connectors are welded to the solid handrailing and ground flush. The male connectors fits into the female and are locked together by means of a grubscrew.



Ridgeclamp

With over 60 different fittings to suit any project, customers can be assured of getting everything they need for their handrail system from Ridgeway. Our fastclamp fittings tighten together with grub screws making them cost effective, and fast and easy to erect using simply hand tools for even the most complex of structures. Ridgeway stock the full range of fastclamp fittings to ensure the accessibility for our customers to suit almost any applications.



Applications Include

- Handrailing
- Guardrailing
- Tyre Racks
- Car Ports
- Polytunnels
- Fruit Cages
- Garment Racks
- Frames
- Canopies
- Market Stalls
- Storage Racks
- Work Benches
- Exhibition Stands
- Security Cages
- Cattlepens
- Cricket Screens
- Greenhouses
- Barriers



**We stock Galv tube lengths to suit fittings
25,32 and 40 n/b**

Beamclamp

A range of fixings designed for making steel work connections without the need to drill or weld on site.

Applications Include

- Steelwork fixings
- Cavity fixings
- Support fixings
- Floor Fixings

ONLINE CONNECTION DESIGNER AVAILABLE AT

www.beamclamp.com/configurator



Zinga

Zinga is a one-component cold applied anti-corrosion zinc coating. Its unique formula provides environmentally safe cathodic protection to steel comparable with hot dip galvanizing with the added advantage that it can be applied as though it were a paint. Zinga is a one pack zinc coating system that can be applied by spraying, rolling or brushing. It is also available in spray cans. It is safe because it contains no known carcinogens and is totally non-toxic in its dry state.



Key advantages

- Safe and easy to use
- Can be applied on site
- Can be used to re-coat existing galvanising
- Existing layers of Zinga can be re-coated
- Excellent primer in Duplex system
- Good Resistance to mechanical abrasion
- Excellent adhesion
- Extremely flexible
- Can be applied to mildly damp surfaces
- Can be applied in extreme temperatures
- Weldable to X-ray quality
- Certified for use with potable water
- Certified as non-flammable
- Unlimited shelf-life and unlimited pot-life



Salt-spray tests and experience from the field have shown that Zinga lasts up to 10% longer than HDG in marine or saline environments due to a slower rate of zinc loss.

GRP Products

Ridgeway have offered GRP Flooring for 25 years and through continued development have become the leading manufacturer of GRP access systems and standard products from design, through to fabrication and installation.

Benefits of GRP include

- Superb strength to weight ratio
- Corrosion Resistance
- Long Life - Low Maintenance
- Slip Resistance



FlowGRiP

GRP FlowGRiP plank flooring is a pultruded, one piece construction, interlocking tongue and groove flooring system for large spans and specialist applications. FlowGRiP provides excellent impact and loading characteristics and is fast and easy to install with low maintenance.



Flowtread

Flowtread is a pultruded grating system manufactured using 'I' section load bearing bars mechanically locked and bonded to transverse bars for maximum strength. Flowtread grating is suitable for wide spans whilst offering a large open area for drainage.



Phenolic Grating

Phenolic Flowtread and Flowgrate type PH provides ultimate performance where Fire Resistance, Low Smoke and Toxicity emissions are critical. Designed to withstand prolonged fire exposure without sustaining structural damage.



Flowgrate Moulded

Flowgrate open mesh and solid top grating is a cost effective, lightweight solution for walkways, platforms, gullies, trenches and Mezzanine, offering good chemical resistance together with excellent anti-slip properties.

Flowgrate is easy to install and available in a variety of thickness and mesh sizes.

Applications

Handrails & Screens

GRP handrails offer a lightweight corrosion resistant system, manufactured to suit your requirements.



Ladders

GRP Ladders are manufactured in accordance with the dimensional requirements of BS4211 1994 and BS5395 Part3 1995 for permanent ladders and walkways.



Structures

GRP Structures are fabricated with profiles manufactured using the latest pultrusion process, offering lightweight and high strength GRP Sections, providing a cost effective alternative to steel. Drawings and structural calculations can be provided where required.



For more information on these or any other GRP items please contact our GRP Department.

Weldmesh™

Weldmesh™ products are manufactured in an environment covered by EN ISO 9001:2000 and our material content, quality and coatings are consistently delivered to exacting specifications; all factory procedures also conform to environmental standard BS EN ISO 14001:1996.

Weldmesh™ has always been a strong part of our product portfolio. With so many users and applications, it is of primary importance that we source the highest quality mesh ensuring the highest quality finish for our customers.

Weldmesh™ is the very best in Strength, Versatility, High Performance and Quality

Weldmesh™ wires are electronically welded at each intersection giving it optimum strength and rigidity, allowing it to be cut or bent to shape.

The Ridgeway stock centre can provide off the shelf solutions for many Weldmesh™ applications ensuring prompt delivery facilitating customer needs.



A wide range of sheets are stocked in pallet quantities, in a variety of wire diameters and mesh sizes to suit typical Weldmesh™ applications such as; Dog runs, hay racks, machine guards, window guards, aviary cages, material handling, building, construction, agriculture and horticulture.

Weldmesh™ Stock Applications

Industrial/ General

Machinery Guards (Finger)	3" x 1/2" x 12g
Machinery Guards (General)	2" x 2" x 10g
Ventilator Guards	1/2" x 1" x 16g
Shelving/ Racking	3" x 1" x 12g
Pallets	2" x 2" x 10g
Stairways	2" x 2" x 10g
Ballustrading / Catwalks	2" x 2" x 8g
Filters	1/2" x 1" x 16g
Display Units	1" x 1" x 12g
Litter Bins	3" x 1/2" x 12g
Lockers	2" x 2" x 10g
Partitioning	2" x 2" x 10g
Security Compounds	2" x 2" x 8g

Security

Window Guards	1" x 1" x 12g
Gilles	2" x 2" x 6g
Cages	2" x 2" x 6g
Crowd Control Barriers	1" x 3" x 10g

Agriculture

Hay Rack Panels	3" x 6" x 6g
Tree Guards	3" x 1" x 10g
Trailer Sides	1" x 1" x 12g

Ridgeway Offer Full Guarantees on all Mesh
Be aware that there are low quality foreign imports elsewhere

Weldmesh™
EFFECTIVE AND VERSATILE

Weldmesh™

Self Colour Ungalvanised

Galvanising after manufacture adds approximately 7% to weights below



Standard panels with flush edges						
Specification	4' x 8'	6' x 12'	6' x 4'	6' x 3'	7' x 12'	84"
	kg	kg	kg	kg	kg	kg
2" x 2" x 6g	16.35	36.42	12.31	9.29	42.41	211
3" x 3" x 6g	11.07	24.54	8.35	6.32	28.54	141.6
3" x 6" x 6g	8.43	18.59	6.36	4.83	21.6	106.9
1" x 1" x 8g	22.07					
2" x 1" x 8g	16.63	37.17	12.5	9.42	48.31	215.77
2" x 2" x 8g	11.2	24.19	8.43	6.37	29.05	144.48
3" x 1/2" x 8g	25.69	57.54	19.29	14.51	67.08	334.59
3" x 3" x 8g	7.58	16.8	5.71	4.33	19.55	96.95
1" x 1" x 10g	13.17	29.5	9.89	7.44	34.39	172.2
1 1/2" x 1 1/2" x 10g	8.85					
2" x 1" x 10g	9.93	22.2	7.46	5.62	25.87	130.2
2" x 2" x 10g	6.69	14.9	5.03	3.79	17.35	88.2
3" x 1/2" x 10g	15.34	34.47	11.51	8.66	40.6	201.6
3" x 1" x 10g	8.85	19.76	6.65	5.01	23.5	117.6
3" x 3" x 10g	4.53	10.03	3.41	2.58	11.67	58.8
4" x 4" x 10g	3.44					
1" x 1" x 12g	8.73	19.53	6.65	4.93	22.77	113.5
2" x 1" x 12g	6.58	14.7	4.94	3.72	17.12	85.3
2" x 2" x 12g	4.43	9.86	3.33	2.52	11.49	57.1
3" x 1/2" x 12g	10.16	22.76	7.63	5.74	26.51	132.2
3" x 1" x 12g	5.86	13.09	4.41	3.32	15.24	75.9

60ft rolls with flush edge	
72"	48"
kg	kg
181.2	121.6
121.7	82
92	62.1
185.19	124.03
124.08	83.29
287.03	191.29
83.34	56.13
147.6	98.4
111.6	74.4
75.6	50.4
172.8	115.2
100.8	67.2
50.4	33.6
97.3	65.1
73.2	49
49	32.9
113.4	75.9
65.1	43.7

**Weldmesh Available in Stainless Steel
As well as Mild Steel Self Colour**

Pre Galv and Hot Dipped Galv

Weldmesh™












Mesh Dimensions and Weights

Galvanised after manufacture

reference no.	Size in mm			Size in inches			6m roll	30m roll
	width	mesh	wire diam	width	mesh	wire diam	Kg	Kg
9/6/22	900 x	6 x 6	x 22g	36 x	1/4 x 1/4	x 22g	5.6	27.8
9/3/9	900 x	13 x 13	x 19g	36 x	1/2 x 1/2	x 19g	5.7	28.7
9/3/5/9	900 x	13 x 25	x 19g	36 x	1/2 x 1	x 19g	4.3	21.6
9/5/9	900 x	25 x 25	x 19g	36 x	1 x 1	x 19g	2.9	14.5
9/3/6	900 x	13 x 13	x 16g	36 x	1/2 x 1/2	x 16g	14.7	73.4
12/3/6	1200 x	13 x 13	x 16g	48 x	1/2 x 1/2	x 16g	19.5	97.7
18/3/6	1800 x	13 x 13	x 16g	72 x	1/2 x 1/2	x 16g	29.3	146.3
9/3/5/6	900 x	13 x 25	x 16g	36 x	1/2 x 1	x 16g	11	55.2
12/3/5/6	1200 x	13 x 25	x 16g	48 x	1/2 x 1	x 16g	14.7	73.4
6/9/6	600 x	19 x 19	x 16g	24 x	2/4 x 2/4	x 16g	6.6	32.9
9/9/6	900 x	19 x 19	x 16g	36 x	2/4 x 2/4	x 16g	9.8	49.1
3/5/6	300 x	25 x 25	x 16g	12 x	1 x 1	x 16g	2.5	12.7
6/5/6	600 x	25 x 25	x 16g	24 x	1 x 1	x 16g	5	24.8
9/5/6	900 x	25 x 25	x 16g	36 x	1 x 1	x 16g	7.4	37
12/5/6	1200 x	25 x 25	x 16g	48 x	1 x 1	x 16g	9.8	49.1
9/0/6	900 x	6 x 50	x 16g	36 x	2 x 2	x 16g	3.7	18.7
9/5/4	900 x	25 x 25	x 14g	36 x	1 x 1	x 14g	11.5	57.3
12/5/4	1200 x	25 x 25	x 14g	48 x	1 x 1	x 14g	15	76.1

Weldmesh Gauges - Galvanised Finish

approx		approx	
	22g 0.07mm		10g 3.10mm
	19g 1.00mm		8g 4.00mm
	16g 1.60mm		6g 4.70mm
	14g 2.00mm		5g 5.00mm
	12g 2.50mm		

Weldmesh Flat™



Flat on Edge Panels		Edge on Edge Panels	
1200 x 2400mm		1200 x 2400mm	
Self colour		Self colour	
(bright wire)		(bright wire)	
SPECIFICATION		SPECIFICATION	
mesh x wire	Panel	mesh x wire	Panel
sizes	Weight (Kg)	sizes	Weight (Kg)
	7.24	25x25x6/3mm	32.07
	14.25		
	16.28	Made to order panels available	

Perforated Metal

Ridgeway have supplied perforated metal for over 20 years, and can provide a level of technical expertise well beyond other stockists

Perforated sheets in stock to suit as many product applications as possible, we can supply products off the shelf to suit:

architectural shop fitting designs,

shop shelves to aid water flow from sprinklers to minimise damage in case of fire,

balustrades,

balconies,

screening,

decorative cladding,

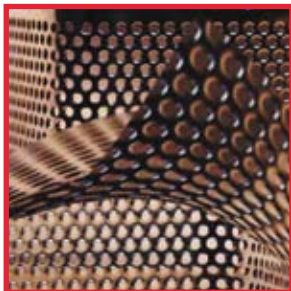
airport and outdoor furniture,

sunscreening products,

security products.

Materials Include:

stainless steel, aluminium, carbon steel, perf expanded or plain in fill panels, if a special is required we aim to provide the product as quickly and efficiently as possible contact our sales team today.



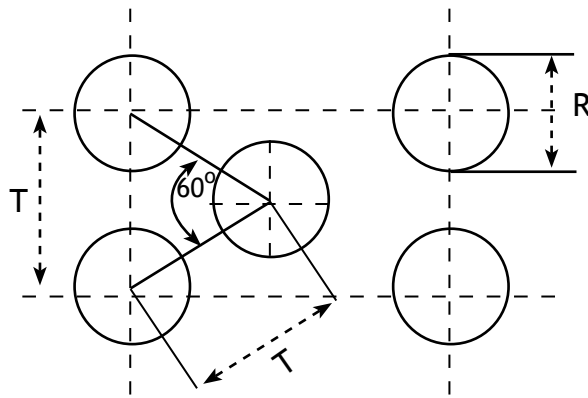
Stock sizes 2M x 1M
and 2.5M x 1.25M



(R) MM	(T) MM	AREA %	SHEET THICKNESS IN MM							
			0.50	0.75	1.00	1.25	1.50	2.00	3.00	
1.50	2.50	32.70	•							
2.00	3.50	29.60		•						
3.00	5.00	32.70			••					
3.00	6.00	22.70				•				
4.00	6.00	40.30		•						
5.00	7.00	46.30			•					
6.00	9.00	40.30			••					
8.00	12.00	40.30				•				
10.00	15.00	40.30		•						
12.00	16.00	51.00				•				
15.00	21.00	46.30					•			

- = MILD STEEL SELF COLOUR
- = STAINLESS STEEL TYPE 304

ROUND HOLES STAGGERED 60° PITCH



**Stainless Steel and Aluminium
Perforated Sheets Now Available**

**Pre- Galv Sheets
Available in Belfast Stock**

Security Fencing



Nylofor 3M & 3D

New 3m panel features maximum security double horizontal wire reinforcements across the beam means 20% fewer posts, 20% less concrete and 20% reduction in installation time, cost effective solution for industrial sites and long runs of fencing.



Nylofor 2D Super

Heavy gauge Weldmesh™ panels feature twin horizontal wires on either side of the verticals, offering increased rigidity and resistance to cutting. The profile is decorative and allows excellent through vision, suitable for many applications.



Paladin Classic

The most popular Weldmesh™ panel due to its innovative appearance. It is specified for a wide range of uses where an aesthetically pleasing appearance is essential. The panels feature pressed 'V' forms containing additional 4mm diameter wired for the full panel width for strength, rigidity and style whilst providing a cost-effective anti-intruder barrier.



New Paladin FX

A new addition to the Paladin family retaining its innovative appearance whilst combining a more rigid panel with the universal fixing bracket system.



Nylofor Extra

This new cost effective heavy duty panel uses 150 x 25mm anti-climb mesh. Panels are 2.4 high and are available in black and green. This panel system is fixed using the universal bracket system.



Roll Top

The principle feature of this fencing is the unique and "user friendly" closed beam section located along the top and bottom edge of the panel. With no sharp or raw edges, Roll Top panels are suitable where safety is a consideration.



Sentinel Railing System

Designed and developed in conjunction with our major clients and contractors these provide a high quality and elegant solution to a wide range of applications. Our railing systems are designed to suit applications where the emphasis is not exclusion but on protection, safety and demarcation making it the system of choice for schools, parks, playgrounds and commercial premises.



Securifor 2D

With many of the features of the Securifor 3D, this new panel incorporates a unique combination of increased vertical wire diameter and double horizontal wire. The result is a rigid, higher level of strength and security and an extremely flat panel.



Securifor 358 [TM]

Securifor 358 is world renowned for its performance as an anti-climb and anti-cut through barrier, whilst providing the lowest level of visual impact to the surroundings.



Fencing Ball Courts

Multi-Games

This system is ideally suited to a games containment area, with provision for recessed goal areas and increased heights across goal ends or goal areas. Standard finished heights 2.0m, 2.4m, 3.0m, 4.0m, 5.0m and 6.0m.



Post Fixings

For the first time a major manufacturer has sat down with its prime clients and contractors to design a complete range of Ball Court Systems. The result is a unique state of the art system developed with the capability of meeting the rigorous demands of our customers.



Multi Sports and Multi Sports Plus



Professional Ball Courts
Ball Court Gates
New Varimesh with Special Curved Safe Corners
Safe Post Fixings



Available Now Ex Stock Express Collection & Delivery Service

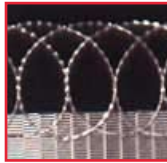


Full Range of Fencing Accessories and Tools please enquire at sales team

Fencing Extras

Razor Barb

Razorbarb is a very effective means of achieving added security. It comes in three diameters, 450mm, 710mm, & 965mm depending on the level of security required.



Barbed Wire

Barbed Wire can be supplied on reels holding 200m. It is produced to BS4102 and is heavily galvanised to BS443.



AVSB Expamet

Ridgeway supply all components to make up this system. When fitted, it provides an effective scaling barrier, while still maintaining aesthetic appeal.



Alleygates

These gates have revolutionised security for town dwellers who have access alleys beside their homes. They are increasingly used as an effective method of crime prevention.



Raptor

This system of scaling barrier is often favoured for up to date buildings using it's aesthetic appeal in areas of high visibility. It can be supplied in red, green, blue, black and grey.



Gates & Access Control

Robusta Swing Gates

Strong and versatile improved design. Single and double leaf manually operated. Designed to minimise the number of components for fence assembly. All gates are supplied complete with instructions for assembly and erection.



Sliding Manual Gates

Robusta gates are extraordinarily solid due to their section and the complete welded construction. Frame and bars form one piece. Robusta gates integrate perfectly with all professional Betafence. Available in a wide range of widths, heights and RAL colours.



Cantilever Sliding Gates

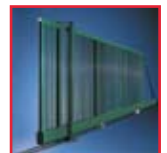
Bekamatic Motorised Gates

Access control areas can benefit from the motorised gate because of their ability to adapt to the special needs of the customer. The gates are examples of advanced technology. Designed to the smallest detail and finished for optimal security of operation and longevity.



Robusta Sliding Gates on Rails

The design, construction and finish of the system is the result of the practical experience of the professional installers backed by the technological know how of Betafence.



Temporary Fencing

www.ridgefence.com

Anti-Climb Panel

Ridgefence has patented Powerjoint tube connections making it the UK's strongest pre-galvanised panel. The extra rigidity gives added security and a longer lifespan.



Roadguard

Road guard and Crowd Barriers. A heavy duty range of high quality, low-level pedestrian barriers ideal for city centre demarcation, shows and events.



Hoarding Panels

Barricade Heavy Duty is the UK's strongest traditional hoarding panel, designed for multiple re-use and long term or high security applications



Accessories

A wide range of ancillaries are available to complete our temporary fencing systems, making them ideal for almost any location or ground conditions



Ridgefence

Ridgeway pioneered the way with our temporary Site security. Since introducing Ridgefence to the marketplace, we have sold over 15 miles of security fencing. Hoarding panels offer a solid barrier for extra site security that could combine the company corporate identity through the use of company colours and logos on the exterior panel side.

Gabions

Land Reinforcement Systems



Gabion land reinforcement systems provide a stunning look to the problem of soil stabilisation, and are also now used in aesthetic applications where their primary function isn't even necessary. Gabions can be supplied in Flat Mesh which can provide a much greater level of support.

They have been used to produce a natural look by cladding buildings, creating Jetty's, providing land reinforcement at rivers, lakes and many other applications. They have also become extremely popular for use in garden landscaping for their strong aesthetic appeal.

Due to the variety of different sizes, gabions can be used in intricate designs that not only look attractive, but are extremely hard wearing and durable.

Hesco Concertainers

Concertainer Gabions are wire mesh baskets formed by connecting individual panels of mesh with helical spirals on the vertical edge wires, creating an open series of box compartments that fold in a concertina fashion to be flat packed.

Lids and bases are sometimes supplied loose with helical spiral binders to connect the top and bottom of the open calls along one edge. Alternatively they may be factory fitted where practical for transportation purposes.



Gabions

BETA FENCE

Trapions

Concertainer trapions are a form of gabion manufactured from welded mesh panels with either one or both faces inclined at varying angles to the horizontal dependant upon the unit height. They are supplied in lengths of 1, 2 or 3m or part lengths thereof and pre assembled with helical spirals for flat packing and ease of transportation to site.



Mattresses

Weldmesh™ Mattresses are prefabricated from welded steel wire mesh. They are large in plan compared to their height and are pre-clipped in a penfold fashion with stainless steel clips every third mesh space in the factory with the lids left loose for transportation purposes. The units flat pack down for storage and ease of handling.



Gabion Applications

Hesco Bastions

Concertainer Bastions are formed similar to concertainer gabions but are factory lined internally with a non woven geotextile membrane to the perimeter mesh panels of the unit allowing for the use



of suitable selected granular fills to ensure compaction of the materials without settlement.

Professional Installation Available

Gabion Cladding Excellence



Architectural Mesh



Amazon 4610/4

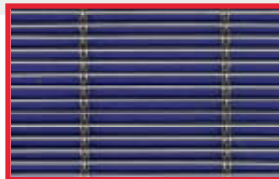
Material : Stainless Steel
AISI 316L. DIN 1.4404



	Metric	Imperial
Open Area	66%	66%
Thickness of Mesh	8.0mm	0.32ins
Weight	9.3Kg / m ²	1.9lbs/ft ²
Maximum Mesh Width	2000mm	78.74ins
Standard Panel Size	3000mm x 2000mm	8.11ins x 78.74ins
Standard Fixing System Angle Frame Secured with Flat Strip		

Cascade

Material : Stainless Steel
AISI 316L. DIN 1.4404



	Metric	Imperial
Open Area	56%	56%
Thickness of Mesh	6.5mm	0.26ins
Weight	7.37Kg / m ²	1.51lbs/ft ²
Maximum Mesh Width	2000mm	78.74ins
Standard Panel Size	3000mm x 2000mm	118.11ins x 78.74ins
Standard Fixing System Angle Frame Secured with Flat Strip		

Coniston 519

Material : Stainless Steel
AISI 316L. DIN 1.4404



	Metric	Imperial
Open Area	58%	58%
Thickness of Mesh	5.5mm	0.22ins
Weight	8.0Kg / m ²	1.64lbs/ft ²
Maximum Mesh Width	2000mm	78.74ins
Standard Panel Size	3000mm x 2000mm	118.11ins x 78.74ins
Standard Fixing System Angle Frame Secured with Flat Strip		

Medway 100/3

Material : Stainless Steel
AISI 316L. DIN 1.4404

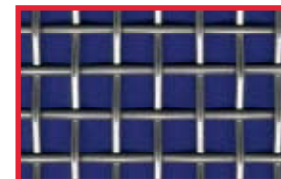


	Metric	Imperial
Open Area	65%	65%
Thickness of Mesh	10.0mm	0.39ins
Weight	10.0Kg / m ²	2.05lbs/ft ²
Maximum Mesh Width	2000mm	78.74ins
Standard Panel Size	3000mm x 2000mm	118.11ins x 78.74ins
Standard Fixing System Angle Frame Secured with Flat Strip		



Windermere 16/4

Material Stainless Steel
AISI 316L. DIN 1.4404



	Metric	Imperial
Open Area	64%	64%
Thickness of Mesh	8.0mm	0.32ins
Weight	10.16Kg / m ²	2.08lbs/ft ²
Maximum Mesh Width	2000mm	78.74ins
Standard Panel Size	3000mm x 2000mm	118.11ins x 78.74ins
Standard Fixing System Angle Frame Secured with Flat Strip		

Some Examples from our vast Range

Expanded Metal



Stock Table

EXPAMET STAINLESS STEEL MESH

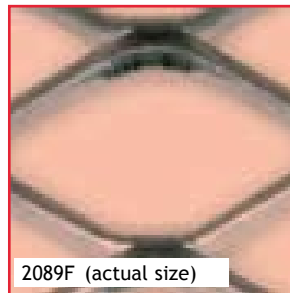
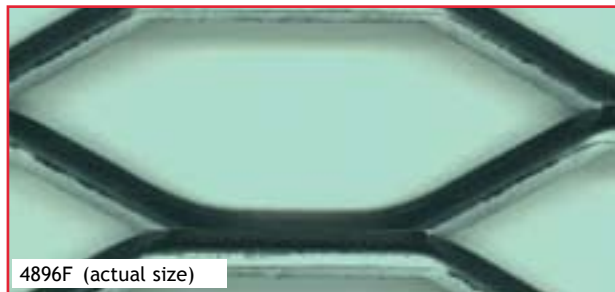
Ref	Pattern	Sheet Size	LW x SW x Thickness mm
		420 X 10M	
MXS927s	926S	420x10M COIL	3.180 X 1.81 X 1.5 mm

INSECT MESH - ARCHITECTURAL - FLITRATION - LOUVRE DOORS - SECURITY

EXPAMET STEEL WALKWAY MESH

Pattern	Sheet Size	LW x SW x Thickness mm
WK2496	915 X 2290MM	60.96 x 25.40x4.5 mm
WK2496	1220 X 2440MM	60.96 x 25.40x4.5 mm
WK2496	1524 X 1830MM	60.96 x 25.40x4.5 mm
WK4896	610 X 3048	121.92 x 33.87 x 4.5 mm
WK4896	610 X 3660MM	121.92 x 33.87 x 4.5 mm
WK4896	610 X 1980MM	121.92 x 33.87 x 4.5 mm
WK4896	915 X 1620MM	121.92 x 33.87 x 4.5 mm
WK4896	1830 X 1830MM	121.92 x 33.87 x 4.5 mm
WK4898	2440 X 1220MM	121.92 x 35.86 x 6.0 mm
WK4898	3050MM X 1525MM	121.92 x 35.86 x 6.0 mm

Gripwalk and Supagrip Anti Slip Walkways Available please enquire



EXPAMET ALUMINIUM MESH

Pattern	Sheet Size	LW x SW x Thickness mm
901A	ROLL 610 X 10M	3.18 X 1.81 X 0.32
351A	SHEET 1220 X 915MM	10.236 X 5.64 X 1.90
351AG	SHEET 1220 X 610MM	GOLD ANODISED
351AG	SHEET 1220 X 915MM	GOLD ANODISED
1294A	SHEET 2440 X 1220MM	30.48 X 11.72 X 1.60

EXPAMET STEEL MESH - FLAT

Pattern	Sheet Size	LW x SW x Thickness mm
217F	1220 X 2440MM	6.85 X 3.56 X 0.89
0794F	1250 X 2500MM	14.22 X 4.83 X 0.90

Available in Mild Steel, Galvanised, Stainless & Aluminium.

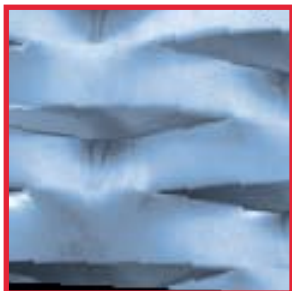
1279F	2440 X 1220MM	23.11 X 5.84 X 1.50
1280F	2440 X 1220MM	24.38 X 7.11 X 1.14
1578F	1220 X 2440MM	28.00 X 9.00 X 2.79
1584F	2440 X 1220MM	32.77 X 10.92 X 1.47
1585F	2440 X 1220MM	33.53 X 12.45 X 1.14
2073F	2440 x 1220mm	42.93 x 14.22 x 2.69
2074F	1220 X 2440MM	39.12 X 18.29 X 2.74
2076F	2440 x 1220mm	43.43 x 18.03 x 2.31
2077F	2440 X 1220MM	43.18 X 17.27 X 1.42
3393F	2440 X 1220MM	77.47 X 27.18 X 2.82

EXPAMET CONVENTIONAL MESH

Available in S/Steel, Aluminium, Mild Steel & Galvanised, Brass & Copper

Pattern	Sheet Size	LW x SW x Thickness mm
1196	2440 X 1220MM	28.575 X 9.52 X 1.20
1595	2440 X 1220MM	38.10 X 16.93 X 1.575
2089	2440 X 1220MM	50.80 X 22.58 X 3.00
2091	2440 X 1220MM	50.80 X 22.58 X 2.50
	1250 X 1250MM	5.482 X 3.5 X 0.6
3092	2440 X 1220MM	76.20 X 33.87 X 3.00
3396	2440 X 1220MM	85.725 X 40.64 X 3.00
3398	2440 X 1220MM	85.725 X 39.33 X 2.50
	1220 X 610MM	28.52 X 4 X 0.72
4097	2440 X 1220MM	101.60 X 50.80 X 3.00

Specialist Patterns & Architectural Expanded



Finishes

Galvanised coatings for low maintenance and powder coating for vibrant aesthetics.

Materials

Expanded metal mesh is available in a range of materials including Mild Steel, Stainless Pre-galvanised Steel, Aluminium, Copper, Pre and Post Patinated Copper, Brass, PVC, Titanium etc.



Added Value

Meshes can be shaped and sheared to fit project requirements. Complete panels for Balustrades and infill panels can be manufactured.

Visit Our Web Site to access our hugh range of Stocked Patterns www.metalmesh.biz



We Expand Specialist Materials

- Brass
- Copper
- PVC
- Titanium
- Precious Metals

Edging Section

Ref No.	Size mm	Thick mm	Gap mm	Weight kg/m	Standard Length mm
UF1	6.35	1.2	1.78	0.13	2490
UF2	6.35	0.55	1.78	0.07	1905
UF3	12.7	0.9	1.78	0.18	2540
UF4	19.05	1.2	5.08	0.38	3810
UF5	31.48	1.2	1.78	0.62	3810
Suitable for framing flattened Expamet up to and including 1.58mm					
UF6	12.7	0.9	3.3	0.2	2540
UF7	19.05	1.2	3.3	0.38	3810
UF8	31.75	1.2	3.3	0.62	3810
Suitable for framing flattened Expamet up to and including 3.18mm					
UF9	19.05	1.2	5.08	0.38	3810
UF10	31.75	1.2	5.08	0.62	3810
Suitable for framing conventional type Expamet expanded steel with strand widths of 2.39mm or under					
UF11	19.05	1.5	10.16	0.45	3810
UF12	25.4	1.5	10.16	0.63	3810
UF13	25.4	25.4	25.4	25.4	3810
UF14	38.1	38.1	38.1	38.1	3810
UF15	38.1	38.1	38.1	38.1	3810
UF11	UF12	UF13	UF14	UF15	
Suitable for framing conventional type Expamet expanded steel with strand widths of 4.75mm or under					
UF16	14.29	1.5	12.7	0.46	3810
Suitable for framing conventional type Expamet expanded steel with strand widths of 6.09mm or under.					
UF18	19.05	1.2	6.5	0.42	3810
UF19	31.75	1.2	6.5	0.66	3810
Suitable for framing 10g (3mm) and 12g (2.5mm) diameter welded mesh and expanded metal with strand widths up to 3.2mm. All dimensions given in mm					

Expert Training

Be SURE with Ridgeway Trade Focussed Training Courses



Ridgeway have established a reputation for high training values, reliable course content and effective practical demonstrations.

With accreditation by PASMA and courses approved by CITB and the Hire Association of Europe, it is only natural to expect an equally high standard from every aspect of our training division.

Our purpose built training centre is suitable for both large and small classes and our training service includes a dedicated trainer to provide professional and accurate training to suit your needs. The training room can also be booked for conferences with refreshments provided on request.

Our primary aim is to produce training courses that really make a difference to the way people work.



APPROVED TRAINING PROVIDERS

Industry Applications

Our product applications include:

Chemical & Process



Flooring
Balustrading
Structural
GRP
Architectural
Installation



Water & Waste Treatment



Flooring
Balustrading
Structural
GRP
Architectural
Installation



Rail & Transport



Flooring
Balustrading
Structural
GRP
Architectural
Installation



Offshore & Marine



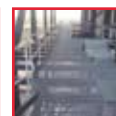
Flooring
Balustrading
Structural
GRP
Architectural
Installation



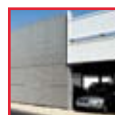
Power Generation



Flooring
Balustrading
Structural
GRP
Architectural
Installation



Architectural



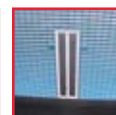
Flooring
Balustrading
Structural
GRP
Architectural
Installation

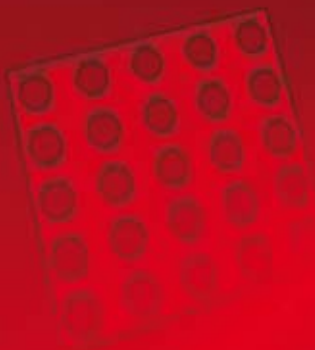


Leisure



Flooring
Balustrading
Structural
GRP
Architectural
Installation





RIDGEWAY

103 Airport Road West

Belfast

BT3 9ED

T : 02890454599

F : 02890454596

E : info@ridgeway-online.com

W : www.ridgeway-online.com