

Flooring Products

Flowforge Flooring



Ridgeway open steel rectangular pattern flooring is constructed from mild steel to BS EN 10 025 Fe430A and is constructed by a forge-welding process in which the load bearing and transverse bars are heated and joined under pressure.

Standard Range

Pitch	Bearing Bars	Serrated	Plain	Galv	Self Colour
41/100	25 - 50 flat				
	3mm or 5mm	Yes	Yes	Yes	Yes
41/50	25 - 50 flat				
	3mm or 5mm	Yes	Yes	Yes	Yes
30/100	25 - 50 flat				
	3mm or 5mm	Yes	Yes	Yes	Yes
30/50	25 - 50 flat				
	3mm or 5mm	Yes	Yes	Yes	Yes

Our full range of pitches available are: 41, 35, 33, 30 or 21 by 100, 50, 75 or 37.5mm - see below.

* 20 & 60mm depth available on request.

Bar Arrangements

Many types of flowforge bar arrangements have been developed to comply with worldwide application and safety requirements and allow a customer to choose a flooring to match loading requirements. In addition, a range of smaller mesh sizes gives the added safety feature of stopping objects from passing between the bars and increased areas of underfoot contact.

Transverse bar are 6mm twisted square bar, but others are available.

Flowforge is available in standard panel form, normally from stock, in nominal 6m x 1m lengths. All fabrication is done from these 6m x 1m nominal mats to suit individual requirements.

Applications

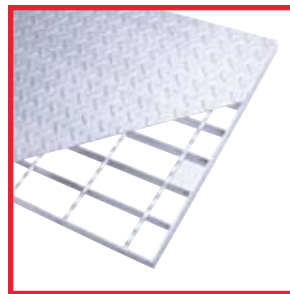
Flowforge is suitable for most flooring walkways, gantries, platforms etc and has been used upright as fencing.

Serrated Flowforge gives improved grip in oil and icy conditions for improved performance particularly for the offshore industry.

* Load tables are available on page 12 & 13.

Flowdeck Durbar Flooring

Flowdeck is half the weight of equal strength chequer plate. This equates to less tonnage for handling, transportation and erection than with the equivalent chequer plate, producing overall cost and weight savings.



Standard Range

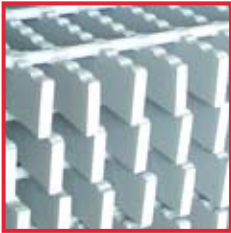
The basic substructure of Flowdeck is Flowforge Open Steel Flooring with load bearing bars at 41mm pitch (5mm thick for heavy duty type) with 6mm transverse bars welded at 100mm centres and a surface plate of 3mm thick durbar pattern chequer plate welded to the substructure.

Special Flowdeck flooring can also be designed to suit wheel loadings.

**Please contact our sales office
for more details**

Heavy Duty Flooring

Flowforge



Ridgeway's range of Heavy Duty flooring combines all the advantages of forge welded Flowforge with the extra load carrying capabilities of a heavy-duty floor.

Heavy Duty Flowforge is constructed from load-bearing bars in various sizes at 35mm and 41mm pitch with 8mm

or 9mm dia. rods forge welded to the upper edges of the load bearing bars. Other bar arrangements may be available upon request dependent on quantity.

Flowgrid

Flowgrid is available with load bearing bars at 50mm pitch with 12mm square bars securely welded to the load bearing bars at 100mm pitch. Other bar arrangements are available on request, dependant of quantity.

Flowgrate

Flowgrate is available with load bearing bars 30mm to 100mm. (These bars are spaced at 50mm, others are available on request.)

Standard finish is either self-colour or galvanised.

Flowgrid and Flowgrate is designed as heavy-duty industrial flooring, ideally suited for use as

- Bridge Decking
- Trench Covers
- All applications where extra heavy loadings need to be sustained

Flowlok Aluminium Flooring



Flowlok is designed to give the maximum structural performance in corrosive conditions.

By virtue of its design, Flowlok is easily cut to shape without weakening its load carrying capacity.



Applications

- Architectural Walkways
- Sunshades
- Window Cleaning Access
- Roof Walkways

Benefits include

- Maximum Structural Performance
- Lightweight, Long Lasting & Highly visible
- Spark & Corrosion Resistant

Diamond Pattern

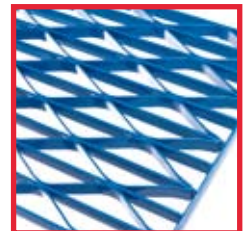
Constructed of load bars at either 38mm or 20mm spaces separated by pressed spacer bars welded on underside at every junction in mild steel.

Applications

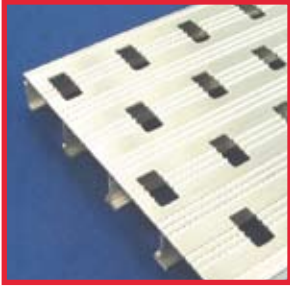
- Water, Petroleum and Process Industries
- Power Stations
- Offshore Installations

Standard Range

- Plain or Serrated load bearing bars
- 3mm or 5mm thick load bars
- 38mm(D38) or 20mm (D20) gaps
- Fully bound panels



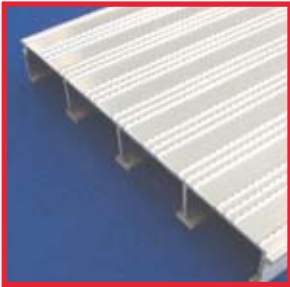
Flowgrip



Flowgrip is an extruded aluminium flooring with a ribbed pattern giving a slip resistant top surface. It gives maximum structural performance under corrosive conditions and can be cut to any shape to suit individual requirements.

Flowgrip has a very high strength to weight ratio and its lightweight, maintenance free qualities have led it to be used extensively in many areas.

Available in two different depths (40mm deep and 25mm deep), both with a plain surface, serrated surface and slotted plank to assist slip resistant and drainage if required.



Standard planks are 6m long by a nominal 250mm wide but Flowgrip is also supplied in a fully fabricated form to suit a client's requirement.

Applications

- Architectural Walkways
- Sunshades
- Window Cleaning Access
- Roof Walkways

Benefits include

- Maximum Structural Performance
- Lightweight, Long Lasting & Highly visible
- Spark & Corrosion Resistant

Standard Flooring Panels

Our Standard Products division is dedicated to supplying you with a range of our products 'Off the Shelf'. Stockline is a service created to guarantee stocks of our most popular products on a daily basis.

If you wish to fabricate your own products, then our Standard Products Division is ideal for you offering:

Standard Panels include

- 6m x 1m in Mild Steel (Self Colour or Galvanised)
- Stainless Steel in grade 304 or 316
- Aluminium in 4m x 1m

Our most popular load bar sizes are

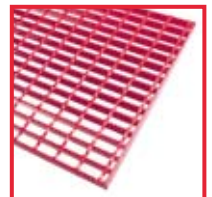
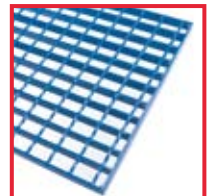
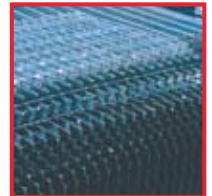
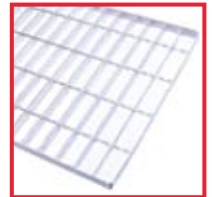
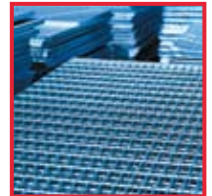
- | | |
|----------|----------|
| ▫ 25 x 3 | ▫ 25 x 5 |
| ▫ 30 x 3 | ▫ 30 x 5 |
| ▫ 40 x 3 | ▫ 40 x 5 |

in both 41/100 pitch and 30/100 pitch but if any of the above is not what you are looking for we can manufacture to suit your specifications.

Benefits include

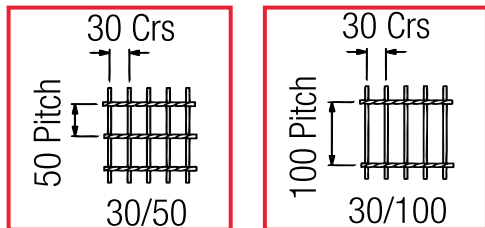
- Reduced Delivery time (usually 2/3 days)*
- Flexibility of projects
- Easy to order
- Saving you Time & Money

* Dependant on stock availability.



Load Tables

Flowforge



Steel Flooring - 30 Pitch

Use of Grating	UDL
Light Duty (Access limited to one person)	3.0 kN/m ²
General Duty (Regular two-way pedestrian traffic)	5.0 kN/m ²
Heavy Duty (High density pedestrian traffic)	7.5 kN/m ²

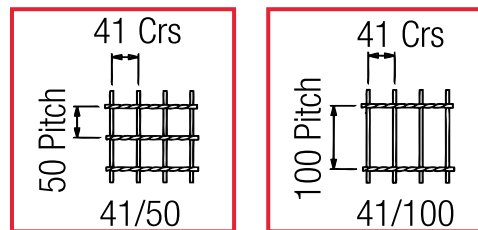
Flooring Type - 30/100

Load	Weight (Uniform Loading - Maximum Span)			
	kN/m ²	3 kN/m ²	5kN/m ²	7.5kN/m ²
20 x 3	0.190	1040	1020	890
25 x 3	0.231	1450	1275	1110
25 x 5	0.363	1690	1510	1320
30 x 3	0.271	1700	1535	1340
30 x 5	0.431	2000	1815	1580
35 x 3	0.309	1970	1790	1560
35 x 5	0.496	2260	2090	1850
40 x 3	0.350	2190	2030	1780
40 x 5	0.564	2520	2310	2080

*All units are in mm

*For serration factor please contact sales

*Other Configurations are available on request



Steel Flooring - 41 Pitch

Use of Grating	UDL
Light Duty (Access limited to one person)	3.0 kN/m ²
General Duty (Regular two-way pedestrian traffic)	5.0 kN/m ²
Heavy Duty (High density pedestrian traffic)	7.5 kN/m ²

Flooring Type - 41/100

Load	Weight Uniform Loading - Maximum Span)			
	kN/m ²	3 kN/m ²	5kN/m ²	7.5kN/m ²
20 x 3	0.148	890	920	800
20 x 5	0.228	0.228	1090	950
25 x 3	0.178	1240	1150	1000
25 x 5	0.275	1540	1360	1190
30 x 3	0.208	1560	1385	1200
30 x 5	0.325	1810	1640	1430
35 x 3	0.235	1780	1615	1410
35 x 5	0.373	2080	1915	1670
40 x 3	0.265	2020	1845	1610
40 x 5	0.423	2310	2140	1910
45 x 5	0.473	2550	2335	2110
50 x 5	0.520	2790	2530	2280
55 x 5	0.570	3010	2715	2450
60 x 5	0.620	3260	2900	2620

*All units are in mm

*For serration factor please contact sales

*Other Configurations are available on request